

InspiredLiving

SUMMER 2024 | THE MAGAZINE FOR OLDHAM PFI RESIDENTS



**Helping adults in
Oldham boost their
numeracy skills**

**Partnership with
Oldham Athletic
Community Trust
to support youth
delivery within
Oldham continues**

Here's how you can get in touch with us

Call

Call Great Places or Wates on **0300 123 2003**

A full range of services is available between 8am and 6pm, Monday to Friday. An extra out-of-hours service, provided by Wates, can be reached using the same number.

Press 1 – for Wates Living Space, for help with repairs, refurbishment and new-build enquiries.

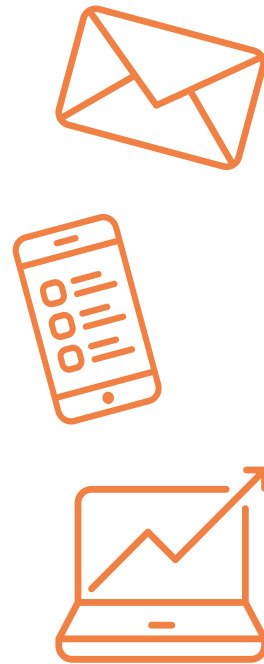
Press 2 – for Great Places Housing Group, for help you with housing management and information on sales units.

Email

Need to email us? Drop the Great Places team a line on **oldhampfi@greatplaces.org.uk** or contact the Wates team on **infooldhampfi@wates.co.uk**.

Come and see us

You can also pop into the Crossley Centre, 323 Denton Lane, Chadderton, OL9 9GA or call on **0161 652 1419**. Alternatively, you can visit the Primrose Centre, 9 Magnolia Gardens, OL8 1HX which you can call on **0161 624 7202**.



Welcome to

InspiredLiving!

Welcome to your latest edition of Inspired Living!

Welcome from Gemma McGiffen, PFI Manager

Hello all and welcome to the Summer edition of Inspired Living. As usual, it's been a busy few months since our last edition.

We have appointed and embedded our Grounds Maintenance service with our new contractor Tivoli. They are now in full swing throughout the summer months and are doing a superb job. We have invested in the replenishment of planting in recent weeks as we feel it is important to take pride in our green spaces.

There are lots of plans for community events in motion, and we will share the details with you soon. We are also interested in hearing and capturing your views on services, and as such we will be setting up more opportunities in the near future for customers to feel engaged in services and offer feedback. Watch this space!

Customer feedback is something we are always looking for – your neighbourhood walkabout dates are included so please feel free to come along and give us your thoughts on your neighbourhoods.

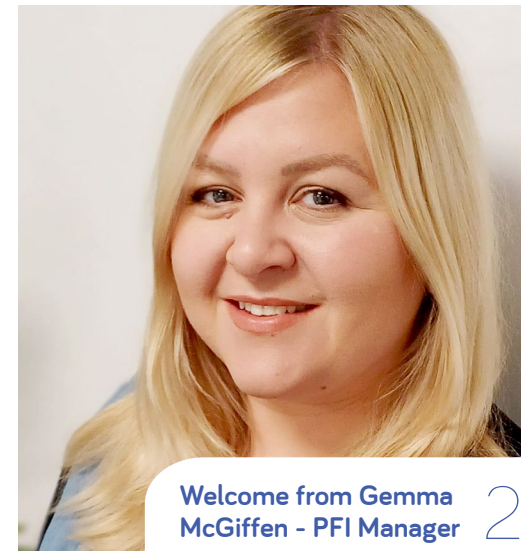
Finally, we would like to hear from any residents who would be interested in setting up a gardening enterprise to offer to residents with support from Great Places. If you would like to find out more, please email **oldhampfi@greatplaces.org.uk** or speak to your local Neighbourhood Coordinator.

I hope you enjoy reading our updates and look forward to seeing you soon.



Gemma McGiffen
Housing Management
PFI Manager

What's inside?



Welcome from Gemma McGiffen - PFI Manager 2



Five Minutes with Leanne Keane - Your Community Partnership Manager 4



Oldham Athletic Community Trust 5



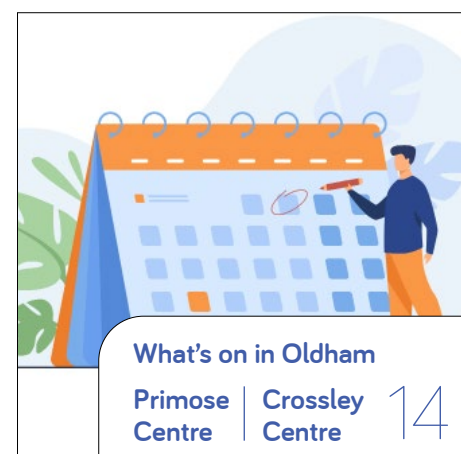
SUPPORT Working Well: Support to Succeed 6



Neighbourhood News 7



Money Matters: helping you take control of finances 13



What's on in Oldham
Primrose Centre | Crossley Centre 14



Wider borough news 18



How are we doing? 21

5 minutes with Leanne Keanne, Community Partnership Manager

We caught up with Leanne, our Community Partnership Manager, to find out more about her role and how she is finding it.

What is your role as Community Partnership Manager?

I am responsible for developing a comprehensive community investment service offer for customers. This has a clear focus on partnership working, ensuring resources are targeted appropriately. I work with customers in our central region from across the Customer Services Directorate, including Independence and Wellbeing and Neighbourhoods. Some of the main themes of work are around financial resilience, health and wellbeing, employment and skills and digital inclusion.

Have you always worked in the housing sector?

In one form or another, I have worked in housing for around 20 years. I worked in private rented for many years before moving into social housing, when I joined Great Places as a Neighbourhood Services Manager in 2019.

What are your aims and objectives as a Community Partnership Manager?

To work in partnership with internal and external partners to benefit our customers and the communities in which we work, preventing duplication of service provision. To ensure we are meeting the needs of our customers and those living in our communities. I use data and evidence to inform partnerships, initiatives and projects, ensuring outcomes are clearly defined and there is an evidenced need.

What do you most enjoy about your role?

I most love the people that I get to meet. Whether that be customers who attend our community centres; those I get to meet whilst out in our neighbourhoods; or those working for grassroots organisations to support our customers and communities, who work tirelessly to support those most in need.

What do you like to do in your spare time?

I don't have much spare time between work and two children, but I love spending time with them and always make sure I find the time to keep fit by doing group training and running. My biggest achievement was running the Manchester Marathon a couple of years ago.

Partnership with Oldham Athletic Community Trust to support youth delivery within Oldham continues

This partnership specifically supports youth provision delivered with the local area, which will now continue to deliver youth engagement opportunities on a weekly basis to young people aged 8 to 18 on a free-of-charge basis, activities include gaming, table tennis and football.

Over the past 12 months, there have been some outstanding highlights, these are:

- Young People completed a project called the climb, which saw them engage in five separate workshops. The workshops included leadership and also cooking.
- They ran a bonfire and firework safety workshop for all participants.
- A group were selected to play against a team from another project, then visited Boundary Park to watch an Oldham Athletic game.
- Three different groups visited Boundary Park to watch a game.
- They ran a vaping intervention workshop, highlighting the risks and dangers of vaping.

Leanne Keanne, Community and Partnerships Manager for Great Places Housing Group said:

"Great Places is pleased to be working in partnership with Oldham Athletic Community Trust. We have a commitment to try and improve the lives of the people who live in our homes and our communities. Engaging the community at a young age will help to influence their aspirations and have an impact on the future in the longer term. The sessions that have been carried out over the past year with the young people tackle the issues that our young people are facing at this current time and with the number of people attending each week it shows it's a well-needed provision."

Martin Vose, OACT Head of Community, commented:

"We are delighted to continue to work alongside Great Places Housing to support our weekly youth engagement session. The funding from Great Places allows us to look ahead and plan long term, providing much-needed reassurance and security to the project and in turn the young people who attend."

For more information on the Oldham Athletic Community Trusts delivery please email Martin.Vose@oact.org.uk.



**OLDHAM ATHLETIC
COMMUNITY
TRUST**

Working Well: Support to Succeed

Great Places is working in partnership with The Growth Company on the Support to Succeed programme.

This programme of support will help people aged 19 and over with complex needs who are seeking support to progress and want to make positive steps towards improving their wellbeing, upskilling, accessing volunteering and employment opportunities.

The Growth Company was awarded the contract to deliver the Support to Succeed programme to the Athena network, a consortium of housing associations, working with adults in the city-region experiencing or at risk of long-term unemployment. The programme has been commissioned by Greater Manchester Combined Authority (GMCA), and backed by the UK Shared Prosperity Fund, which replaces previous EU funding schemes.

Through the scheme, we offer person-centred, one-to-one support including work experience, life skills and employability skills, confidence building and support to remove barriers like childcare, travel and skill gaps with the aim to progress participants towards their goals and aspirations.

Dedicated support for customers over the age of 50 experiencing age-related challenges, such as concerns about returning to work or developing new skills, also forms part of the Shared to Success support.



SUPPORT TO SUCCEED

Keira Burns, our Employment and Skills Manager commented on this partnership:

"This is a great programme we are pleased to be involved with. It's the first of its kind through the Athena network. We are covering Oldham, Bolton and Rochdale local authorities and as well as our own Great Places customers we have been engaging with many different services and providers in these areas to promote and support their participants too.

We have seen an increase in referrals more recently and have a wonderful team recruited and mobilised ready to offer support. The holistic nature of the programme means we can address the root cause and offer tailored support that really makes a difference."

You can find out more about the programme here -

www.gcemployment.uk/working-well-support-to-succeed/

Neighbourhood News

High-rise block inspections are starting!

Do you live in Lansdowne Court or Stockfield Mount?

Your monthly block inspections are back where you can come and inspect the communal parts of the building with your Caretaker and Neighbourhood Coordinator. This will allow you to raise any concerns you have about the cleanliness or safety of the block.

The next inspections are due to take place on the following dates:

16 July – 10am – 12pm starting at Lansdowne Court

13 August – 2 - 4pm starting at Stockfield Mount

17 September – 10am – 12pm starting at Stockfield Mount

13 October – 2 – 4pm starting at Lansdowne Court

19 November – 10am – 12pm starting at Stockfield Mount

17 December – 2 – 4pm starting at Lansdowne Court

Everyone is welcome; if you would like to attend, please meet your Neighbourhood Coordinator in the foyer at the starting time and location listed above. The inspections will take around two hours to complete.

Neighbourhood Walkabout Dates: July, August & September 2024

Primrose Bank

Thursday 11 July 2024 at 2pm

Tuesday 6 August 2024 at 10am

Thursday 12 September 2024 at 2pm

Fitton Hill and Dew Way

Thursday 15 August 2024 at 2pm

Tuesday 3 September 2024 at 10am

Crossley

Thursday 25 July 2024 at 10am

Thursday 29 August at 10am

Thursday 26 September at 10am

Early help drop-in with Positive Steps

Positive Steps holds early help drop-in sessions every Thursday at Primrose Bank Community Centre from 1pm.

These support families and individuals with issues surrounding Housing, Finances, Mental Wellbeing, Physical Health, Parenting and Employment.



Join us for our Summer Event!

On Tuesday 30 July at 11am - 2pm we will be holding a Summer Event at The Primrose Centre.

This will be fun for the whole family including:

- A picnic
- Games
- Arts and crafts
- Planting
- Litter picking

This event is free and everyone is welcome to attend. We hope to see you there!



Join us at FoodCycle Oldham

FoodCycle Oldham welcomes anyone to attend as a guest and enjoy a FREE hot meal. No need to book.

Everyone is welcome at FoodCycle. Whatever your reason for needing a meal, you are welcome to join us. Some people come for the food. Some people come for the company. No matter your background, you'll be greeted warmly by our friendly volunteers.

Just turn up on the day to The Primrose Centre, 9 Magnolia Gardens, Primrose Bank, Oldham, OL8 1HX, every Tuesday from 6pm.

If you want to find out more, you can contact oldham@foodcycle.org.uk or visit:

<https://foodcycle.org.uk/location/foodcycle-oldham/>



Housing Lead visit new Great Places' affordable homes at Maple Mill

Councillor Arooj Shah, Leader of Oldham Council and Cllr Elaine Taylor, the council's Cabinet Member for Housing, joined Great Places on a visit to its affordable development at Maple Mill in Hathershaw.

Cllrs Shah and Taylor were joined by Nick Cumberland, our Head of Affordable Development Programme, and members of the project team on a tour of the £13.3m site. The councillors also had an opportunity to meet with some of the customers who have recently moved into the completed new homes.

Built on the site of former derelict mill, the 98-home new development, part-funded by Homes England and delivered in partnership with MCI Developments, provides a range of traditionally constructed homes including one- and two-bedroom apartments and two, three and four-bedroom houses with gardens, parking and good access to local services and amenities. The development's six ground floor cottage-style apartments also provide accessible accommodation for people with poor mobility that require a level-access shower.

All the homes include bike stores and some feature solar panels. To protect the biodiversity of the local area, we have also incorporated bat houses and bird boxes across the development.

Maple Mill is one of six new developments we are currently delivering in Oldham, which will provide a total of 350 new homes, and complements the existing homes the housing group.



Helping adults in Oldham boost their numeracy skills

Great Places worked in partnership with Greater Manchester Combined Authority (GMCA) to deliver Multiply adult numeracy sessions after they launched a new and innovative £14m scheme to support adults with learning essential numeracy skills.

Multiply focused on relevant numeracy skills that customers want and need to know to help them get on in life and achieve their goals. This support can help people secure a qualification valued by employers to boost career opportunities and get them on a pathway to further education opportunities.

We delivered the sessions which focused around managing the cost-of-living crisis through the delivery of workshops. These centred around various themes such as budgeting and making better choices around finance and debt, and they had a real focus on adult numeracy within a cost-of-living crisis context.

The session was delivered to parents in primary schools and for some people, English was not their first language, so Great Places' Employability Coach, Naseem Akhtar, was able to deliver the sessions in English, Urdu and Punjabi, ensuring all attendees understood the content.

We held a celebration event at The Primrose Centre in Oldham where the participants received their certificate and a gift voucher. Ryan Smith, Head of Neighbourhoods at Great Places, wanted to learn more about the Multiply Programme so attended the event and awarded the certificates.

Customers who took part said:

"I didn't know how to work out percentages before coming to this workshop, now when I go shopping, I can understand if a product has 20% off and how much this will save me."

"I have learnt so much about priority and non-priority debt and how to manage my money."



Plaque to be installed in memory of Dorothy Sweatman

Over at Lansdowne Court Gardens, in Chadderton a plaque is being installed in memory of the remarkable and inspirational Dorothy Sweatman. Dorothy sadly passed away in June, she was one of our most active, funny and engaged customers.

She always spoke her mind and held us and our services to account. She was also the eyes and ears on the estate, residing 14 floors up with her trusty binoculars - she made sure we always knew what was going on in the area.

Ryan Smith, Head of Neighbourhoods at Great Places said:

"I recall Dorothy holding us to account in numerous community venues during the PFI build and refurbishment phase, only to be greeted with a tray of delicious cakes and brownies right after!

I was astounded, proud and a tad emotional when I noticed, alongside her picture, her Resident of the Year award from 2015 took pride of place on her coffin. Her family also approached me after to tell me how proud she was of her awards and the role she played in shaping the regeneration and 'demanding' we built a community centre - which of course we did."



Boosting skills for International Women's Day

We're proud of committed to supporting those in our communities to thrive, whether that's by building their skillset, signposting to opportunities or preparing for interviews.

Many fields are still quite male-dominated, and to mark International Women's Day, Great Places and our partners Guinness Housing and Wates put our heads together to run a week of workshops at Oldham College for women over 18 to gain skills in all things DIY, including joinery, tiling, plumbing and plastering.

The series of workshops have been running this week, starting on Monday 4 March and finishing today, Friday 8 March, and are intended for women aged 18 and over who are unemployed or on a low income. A total of fifteen women are signed up to the workshop, nine of whom are Great Places customers.

As well as providing an introduction to fields they might not have considered previously, the week will provide them with mentoring, careers advice and the chance to gain a CSCS card, with access to further employment support. Those who complete the programme will also walk away with a free toolbox to stand them in good stead for the future.

Our Employability Coach Naseem Akhtar took part in the workshops, introducing herself and her role to attendees, and shared her expertise in all things employability and skills-building.

We're thrilled that so many attendees are Great Places customers – we wish them all the best for taking these skills with them going forward.



Wates upgrade to Electric Vehicles

Wates now has a full fleet of electric maintenance vehicles as part of the second major investment in the property services fleet in under 12 months.

Offering a load space capacity of 3.9m3, the ID. Buzz Cargo offers maintenance teams the flexibility they need to carry out day to day repairs and improvements whilst driving down carbon emissions and providing more sustainable access to properties within Ultra-Low Emission Zones.

Our latest investment into electrifying our fleet highlights our commitment to reducing our carbon footprint in our operations and the work we do on behalf of our customers to support a thriving planet.



Money Matters: helping you take control of your finances

We recognise that managing your finances can sometimes feel overwhelming and all too often asking for help can feel like a difficult thing to do.

It's important to remember that we all struggle with money at some point and there's no shame in asking for a helping hand. Whether you're dealing with debt, seeking advice on welfare benefits or facing utility

bill challenges, our dedicated Money Matters team is here to provide confidential support and guidance.

Accessing support made simple

Getting advice from our Money Matters Team is straightforward. Simply send them an email at moneymatters@greatplaces.org.uk and a team member will get back in touch. They'll look to start with a thorough review of your financial circumstances and give you all the information you need to know how to tackle the issues you are facing to help you with your financial wellbeing.

Empowering you financially

- The team can provide practical advice and support in a variety of ways, including:
- Identifying any unclaimed welfare benefits you may be entitled to - helping you to maximise your income
- Supporting you in challenging any incorrect benefit decisions
- Explaining any changes to the welfare benefits system, ensuring you stay up to date
- Helping if you're dealing with utility or water bills
- Providing advice on tackling any debts you may be struggling with
- Helping you apply for any grants you may be entitled to
- Providing practical tips and advice on better managing your finances.

What's on in Oldham?

One Seven Five: An incomplete history of Oldham in 175 objects

Gallery Oldham

Between Now - January

2024 is an important year for Oldham; it marks 175 years since the borough was founded, expanding the town to encompassing the many small towns and villages – and it has expanded even more since, seeing a lot of change over the nearly two full centuries.

We're proud of our diverse heritage as Oldhamers, and to celebrate this important anniversary of our borough, members of the community have come together to create a special showcase to capture its history. They have selected objects that each tell a fascinating story about Oldham, piecing together to build just a small part of the full picture.

This special showcase is available for everyone to see for themselves at Gallery Oldham between now and January. Come along and be taken on a journey back in time, with stories ranging from Oldham's past Olympic glory to close-ups on hidden gems like Oldham's art and natural history collection.

There will be something for everyone, and entry is free of charge – why not take a look for yourself?

Head to their website here

<https://hla.oldham.gov.uk/event/one-seven-five-an-incomplete-history-of-oldham-in-175-objects/>



LiveTheLibrary presents... Bi-Topia!

Oldham Library & Lifelong Learning Centre
18th July

Live at the Library is back for some more cutting edge drama. Northern theatre maker Sam Denson brings to the Oldham Stage a 'comedic, touching and candid piece of writing': BI-TOPIA.

Follow the chaotically honest coming-of-age story, which explores the experience of bisexuality in a truly authentic way, tackling the connections between poor mental health, sexuality and masculinity.

The show will be performed at Oldham Library & Lifelong Learning Centre, Greaves Street, Oldham (OL1 1AL) on 18th July, with a 7pm-8.30pm running time.

Please be aware that the play contains some adult references, strong language, and touches on themes relating to mental health, violence, suicide, as well as themes of a sexual nature. It is recommended that the show is unsuitable for children under 14 years.

General admission tickets cost £6, which you can book here <https://www.eventbrite.co.uk/e/livethelibrary-bi-topia-tickets-799854384997>



Get crafty this summer!

Multiple Locations

25th July, 8th & 21st August

In need of a way to keep the kids busy this summer? There's lots for the whole family to get their hands stuck into, with free arts and crafts workshops led by talented local artists!

Artist Caroline Coates is running interactive art workshops for children aged five and over, and their families, where you can become 'Marvellous Makers'. Sessions run from 1pm-3pm at Oldham Library and Lifelong Learning Centre on Greaves Street, Oldham, OL1 1AL on 25 July, 8 August and 21 August.

You can find out more and how to book here

<https://whatson.oldham.gov.uk/event/art-workshop-with-artist-caroline-coates/>



Make Marvellous Models

Limehurst Library, OL8 3HH

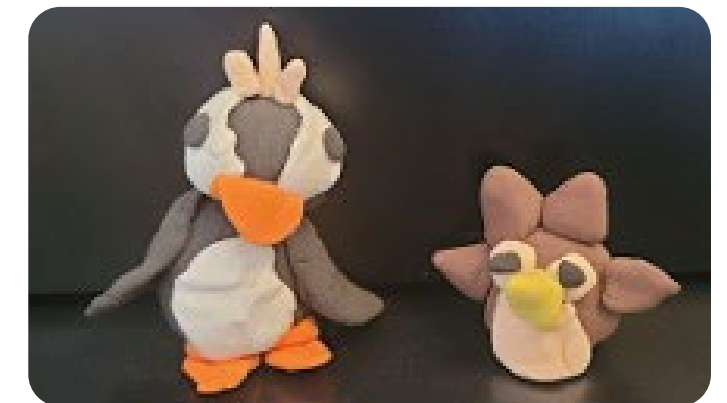
9th & 15th August

If your kids are fans of playdough, lego and more, they'll love the Make Marvellous Models workshop, led by artist Paul Pickford. These sessions are about letting your imagination run wild and designing your own creature – from designing, drawing and sculpting! Think weird, funny, scary – whatever your imagination decides!

Join Paul's workshops on either 9 August or 15 August, 11am-12noon, at Limehurst Library, Lime Green Parade, Oldham OL8 3HH.

Book here <https://www.eventbrite.co.uk/e/make-marvellous-models-tickets-911346009447>

These sessions are recommended for children aged 5 and over, and you'll need to book for any children taking part.



Small Cinema presents... UP!

Oldham Library & Lifelong Learning Centre 31st July

Oldham Libraries has another fantastic family film on offer for their upcoming summer screening; Disney Pixar's classic, 'UP!' (U).

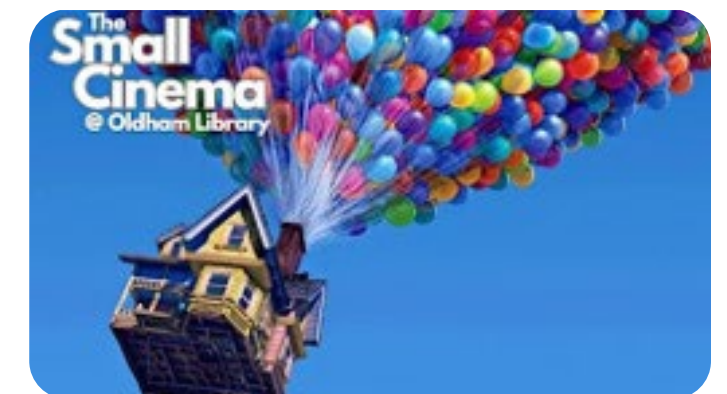
Jump into the adventure with Carl, a retired balloon salesman, who decides to follow his life-long dream of exploring South America by using thousands of helium balloons to turn his home into an airborne vessel... only to find onboard an unexpected stowaway; Russell, a young Wilderness Explorer. Follow the pair as they embark on a wild adventure!

Screening on Wednesday 31 July from 2pm (please note there will be no adverts or trailers), each child attending will receive a goodie bag of treats – though everyone is welcome to bring their own as well.

There will also be an UP!-themed arts and crafts session before the film, between 12 noon and 1.30pm, for anyone feeling creative!

Tickets are £3.30 – you can book here <https://www.eventbrite.co.uk/e/small-cinema-up-u-tickets-885612700427>

This classic family adventure is a great way to keep the kids entertained this summer holiday – you'll find the Small Cinema at Oldham Library and Lifelong Learning Centre, Greaves Street, Oldham, OL1 1AL.



What's on at The Primrose Centre from July '24

Monday

9:15am - 10:15am - Bollywood Dance Class
Contact Jan for dates

10:00am - 12:00pm - Spoons Messy Play
1st Monday of each month. Sensory play for babies up to age 2 who have experienced neonatal care.

10:30am - 11:15am - Ladies Fitness
45 mins circuit-based session & stretching exercise

12:15pm - 2:45pm - ESOL
Entry Level 1 (September start date to be confirmed)

Tuesday

9.15am - 11.45am - Sewing Class
Starting 10th September. Ring Jan to book a place.

12:15pm - 2:45pm - ESOL
Entry Level 1 (September start date to be confirmed)

12:00pm - 2:00pm - Coffee & Crafts
Meet other ladies and learn a new craft over a 'cuppa'

6:00pm - 8:00pm - Free Meal
3-course vegetarian meal provided by the Food Cycle Hub

COMMUNITY FRIDGE – open on Tuesday after the meal if the fridge is stocked.

Wednesday

10:30am - 12:00pm - Abl Health
Healthy Family drop-in sessions for parents

2:30pm - 5:00pm - Parkinson's UK
Meet 1st, 3rd & last Wednesday every month

6:30pm - 8:30pm - M J Dance
Call in for more information and prices

Thursday

1:00pm - 2:30pm - Poethrapy Session
Expression of emotion via poetry (ladies only)

1:00pm - 4:00pm - Early Help Drop-In
Support with issues around housing, finance, mental wellbeing, physical health, parenting & employment

6:30pm - 8:30pm - Youth Club
Year 5 upwards

Friday

6:00pm - 9:00pm - Health & Wellbeing Get-Together with Food
Meet people, share experiences

HALL AVAILABLE TO BOOK FOR PRIVATE PARTIES
Contact Jan on 0161 624 7202, call into the centre or e-mail jan.wade@greatplaces.org.uk to book

Saturday

HALL AVAILABLE TO BOOK FOR PRIVATE PARTIES
Contact Jan on 0161 624 7202, call into the centre or e-mail jan.wade@greatplaces.org.uk to book

Sunday

4:00pm - 7:00pm - Autism Support Group

HALL AVAILABLE TO BOOK FOR PRIVATE PARTIES
Contact Jan on 0161 624 7202, call into the centre or e-mail jan.wade@greatplaces.org.uk to book



What's on at The Crossley Centre from July '24

Monday

10:00am – 12:00pm - Creative Crossley
(Sewing, embroidery, crochet, knitting)

12:30pm – 2:30pm - ABL Health & Nutrition Group
(fortnightly)

6:30pm – 8:30pm - PHAB
(activities to reduce isolation for people of all abilities)

Tuesday

10:00am - 11:00am - Active Ladies Exercise Class (Outta Skool)

11:00am - 12:00pm - Ladies Kitty Party (Outta Skool)
(every 2 weeks)

6:00pm – 8:00pm - Slimming World

Wednesday

10:00am - 2:00pm - Oak Tree Woodcarvers
Creative wood Carving, Annual Membership £20 plus £5 weekly fee. Costs includes all resources Wood and use of equipment.

2:00pm – 4:00pm - Community Fridge (free surplus food) Community Space

Positive Steps - Early Help
Support with employment, housing & wellbeing

Your Community Centre for Chadderton

Please enquire about the above & booking the centre

Contact number - 0161 652 1419

@theCrossleyCentre

323 Denton Lane, Chadderton, Oldham, OL9 9GA

www.crossleycommunity.org.uk

Thursday

10:00am - 11:00am - Active Ladies Exercise Class (Outta Skool)

1:00pm - 2:00pm - Chair based exercise class
Gentle exercise

6:30pm – 8:30pm - Youth Zone
youth club for 11-18 age group (OMBC)

Friday

10:00am - 12:00pm - Community Cooking: Sharing Recipes (ladies only)

6:30pm – 8:30pm - Behind the Curtains Theatre Group

Saturday

9:00am – 11:30pm - Slimming World

12:00pm – 9:00pm - Available for private hire

Sunday

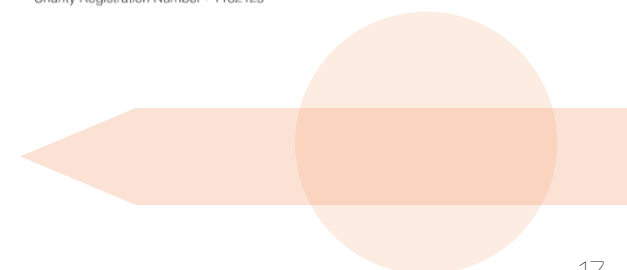
11:00am – 1:00pm - Oldham Tuition Centre
(Maths & English tuition) (term time)

2:00pm – 8:00pm - Available for private hire



CROSSLEY COMMUNITY ASSOCIATION

Charity Registration Number - 1182129



News from the Wider Borough



Peddling the way

The international cycling tournament, the Tour of Britain Women 2024, pedalled off this summer, and the borough of Oldham played host to the fourth stage on Sunday 9 June. Following on from the men's tournament last year, this is the first of its kind to be delivered by British Cycling Events, and was free to attend for anyone interested in a fun day out to cheer on the cyclists and show their support.

It was fantastic to showcase the natural beauty of Failsworth, Oldham, Saddleworth and Shaw, with their steep hills and winding roads. The route began through Failsworth, then carried on down the Oldham Way, Leed Road, up to Lydgate, through Uppermill and Delph, up Grains Road for some hill work, then down into Shaw and out towards Rochdale.

The race was broadcast live flag-to-flag, and spectators could also watch the live-stream on the British Cycling YouTube channels.

What's more, there was an opportunity for residents to get involved through Oldham Council's Tour of Women competition, the challenge to decorate their homes or businesses for the event and submit a picture, to be in with a chance to win £100.

The day was enjoyed by all and hopefully inspired all parts of the community to get active, and maybe even give cycling a go!

Welcoming Cllr Chauhan for a second term

Following the local elections in May, the borough of Oldham has welcomed back Cllr Zahid Chauhan OBE for a second term in office as Mayor of Oldham.

This has come after the sad passing of his wife, Mayoress Afsheen Chauhan in March, following an illness. During this difficult time, Cllr Chauhan had scaled back his duties as mayor in order to take care of his wife and three children.

Cllr Chauhan is also a GP and has served on the cabinet previously, during Elaine Garry's tenure. In his inaugural election, he updated the traditional approach to charity fundraising to dedicating his second year as Mayor to granting residents' wishes.

He said:

"I would like to extend my heartfelt thanks to all the people who have supported me over the last 12 months, your kindness and generosity has been truly appreciated.

"I am looking forward to serving the residents of my much loved hometown and will continue to champion projects that make a real difference to people in our communities."



A magical ocean kingdom at Gallery Oldham

Gallery Oldham have a truly unique exhibition, celebrating the beauty of the natural underwater world – which you can experience for yourself with 'Ocean Drifters', a trail of beautifully designed jellyfish and coral balloon models.

Opening back in May, this creative display produced by Designs in Air will remain at the gallery until the end of summer, so why not come along and admire the tentacles and the coral and relax while they float around the room? You'll feel like you're in the coral reef itself!

Jellyfish are one of earth's oldest species, and could be found along ocean currents for millions of years – well before the dinosaurs! They can be found in deep, dark depths of the ocean, able to thrive in warmer waters with less oxygen than most marine species can – and they are also typically found along shallow tropical coastlines. This exhibition is designed to capture this, with the stunning patterns reflecting the tropical colours of the jellyfish's natural habitat.

If you're feeling creative and inspired, why not come along to Gallery Oldham on Wednesday 21 August at 2pm for their open session where you can design and make your own underwater-themed balloon model?



New support package in place following Yodel's closure of Shaw operation

With Yodel closing its site in Shaw, an estimated 350 people are to be affected and potentially face redundancy as a result.

Oldham Council has been planning an array of support to remediate this, including the provision of specialist training and employment advisors based at Yodel's Shaw location during the transition phase. This has been built on with a wider initial support package from the council.

Part of this is Oldham Council's 'Get Oldham Working' team, which will have a base at the Yodel depot, with advisors being on hand to provide on the spot service to help people find work and training opportunities.

Those affected will also receive full information on and immediate access to the 'Get Oldham Working' service. This will provide practical advice and help to both find and apply for jobs; advice around employment options, or suitable training, courses or apprenticeship opportunities; information around local jobs and recruitment events; as well as signposting to other services to support with money management, energy and household bills, benefits, and health and wellbeing.

Oldham Council is also joining up with other Local Authorities via GMCA to help Yodel employees living both in and outside of Oldham to wider job opportunities around Greater Manchester.

Commenting on the closure of Yodel's Shaw site and the council's commitment to support those affected, Cllr Arooj Shaw (Leader of Oldham Council and Cabinet Member for Reform and Regeneration) said:

"This is devastating news for local people and their families and friends. These potentially large-scale job losses come at a time when people are already struggling because of the cost of living crisis in the UK.

"We are stepping up to help as a Council – and will continue to support local workers in any way we can. Officers are working with Yodel management and have developed an urgent plan of action to provide support. Our specialist staff and resources are being dedicated to these efforts in areas such as helping people find new jobs, training opportunities, and linking them up with wider Council and partners' support services.

"This is a committed local workforce who have worked hard to deliver for Yodel, and have significant skills and abilities that other organisations can benefit from. It's a real blow for local people but we are determined to do everything we can to help them and to continue growing various areas of our local economy and help create more jobs for the future."

How are we doing?

3167
repairs completed in resident's homes

511
gas services completed

91.6%
of repairs completed on the first visit



Estate inspections performance

4 per month

Void re-let time

16 days
(target 21)

Rent collected

98.1%
(target 98%)



