

# InspiredLiving

SPRING 2023

THE MAGAZINE FOR OLDHAM PFI RESIDENTS



Oldham History Project  
celebrates regeneration  
scheme's tenth anniversary



# Here's how you can get in touch with us

## Call

Call Great Places or Wates on **0300 123 2003**

A full range of services is available between 8am and 6pm, Monday to Friday. An extra out-of-hours service, provided by Wates, can be reached using the same number.

Press 1 – for Wates Living Space, for help with repairs, refurbishment and new-build enquiries.

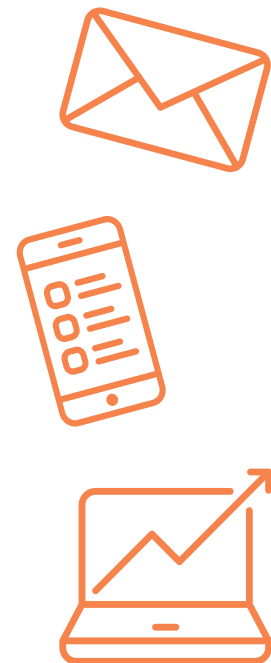
Press 2 – for Great Places Housing Group, for help you with housing management and information on sales units.

## Email

Need to email us? Drop the Great Places team a line on [oldhampfi@greatplaces.org.uk](mailto:oldhampfi@greatplaces.org.uk) or contact the Wates team on [infooldhampfi@wates.co.uk](mailto:infooldhampfi@wates.co.uk).

## Come and see us

You can also pop into the Crossley Centre, 323 Denton Lane, Chadderton, OL9 9GA or call on **0161 652 1419**. Alternatively, you can visit the Primrose Centre, 9 Magnolia Gardens, OL8 1HX which you can call on **0161 624 7202**.



# Welcome to Inspired Living!

Welcome to your latest edition of Inspired Living!

Welcome from Paul Doherty, PFI Manager

It's been a busy few months since our last edition and a challenging period for us in terms of dealing with the ongoing cost of living crisis. Our two community centres have played a really important role in offering customers help and support throughout the winter, operating as warm spaces and offering free food and activities to the local community. I am pleased to report that our free food offer will continue throughout the spring and summer. I would encourage anyone who is struggling to call their nearest centre to see how they can help. There are details of all the activities and events on offer at each of our centres on pages 8-10.

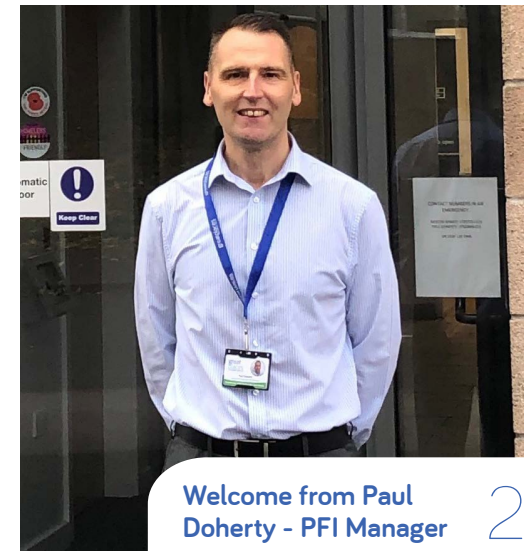
We have had some changes to our housing management team since our last edition, and I would like to welcome Katy Whitehead to the team as our new Neighbourhood Coordinator for Crossley. You can find out more about Katy and her role on page 4. In order to give high-rise customers more of a say in how we manage Lansdowne Court and Stockfield Mount, I have invited customers living in these blocks to attend monthly inspections with Katy and our caretaking team. You can find out more on page 7.

I would also like to remind all customers that we undertake an inspection of each estate once a month. These estate inspections are attended by representatives from Great Places, Wates Living Space and Oldham Council and are open to everyone. I would really like to see more residents attending these inspections so you can provide us with feedback on how you think we are performing. You can find out when the next inspection is for your estate on page 7. If you cannot attend an inspection but would like to meet with us separately, please speak to your Neighbourhood Coordinator or email us at [oldhampfi@greatplaces.org.uk](mailto:oldhampfi@greatplaces.org.uk)

I hope you enjoy reading our updates and look forward to seeing you soon.

Paul Doherty – Housing Management PFI Manager

## What's inside?



Welcome from Paul Doherty - PFI Manager

2



Five Minutes with Katy Whitehead - Your Neighborhood Coordinator

4



Oldham History Project

5



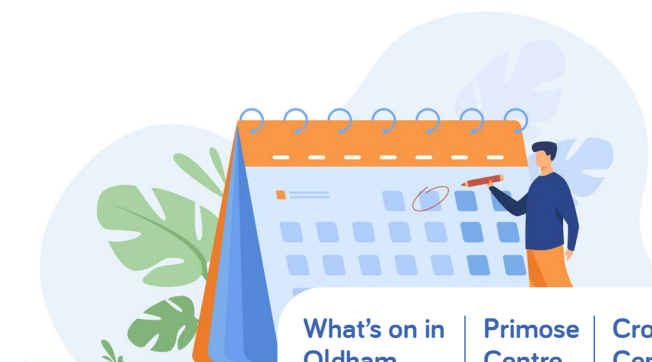
Oldham call out for arts and crafts!

6



Neighbourhood News

7



What's on in Oldham

Primrose Centre

Crossley Centre

8



House exchange

11



Wider borough news

12

## How are we doing?



How are we doing?

14





## 5 minutes with Katy Whitehead - your Neighborhood Coordinator

*We caught up with Katy Whitehead, Great Places' new Neighbourhood Coordinator for Crossley, to find out more about her role and how she is finding it.*

### **What does your role as Neighbourhood Coordinator involve?**

My role is delivering housing management services across Crossley in Oldham. I deal with rent accounts, safeguarding, anti-social behaviour and repairs-related issues. As this is within the Private Finance Initiative (PFI), I'm involved in regular walkabouts around the scheme with Oldham Council to ensure all key performance indicators (KPIs) are met. Failing a KPI would mean a financial penalty to the business and so the services delivered must be organised, efficient and completed within the set time limits.

### **Have you always worked in the housing sector?**

No – my career began in the care sector. I have worked with the elderly, care leavers and adults with Autism Spectrum Disorder and mental health conditions. My roles have been across the UK as I lived within the military from 2003-2019, before moving back to the North West. I began working at Great Places in 2019 as an Independent Living Coordinator in Salford, then as a Neighbourhood Services Manager in Oldham in 2020 before moving to the PFI in March 2023.

### **What are your aims and objectives as Neighbourhood Coordinator?**

I aim to always maintain a high delivery of housing services to our customers and ensure that their homes are in a good condition, that they have any support they require and that they feel listened to and empowered to be part of a community they can be proud of.

### **What do you most enjoy about your role?**

My role has so many aspects to it; no two days are the same and I feel like I am always learning, which can be exciting and keeps my mind fresh. Working closely with our customers is one of my favourite parts; building relationships and understanding an individual's or family's circumstances and supporting them where I can is what makes me tick. I believe that when a customer meets me, they meet Great Places and having a good experience or outcome with me will mean their perception of the organisation will be a positive one.

### **What do you like to do in your spare time?**

I have 2 children who are my world; Archie is 12 and Isabella is 6. They take up most of my time although I do love going to the gym, which I aim to do five times a week! I have also just started to do more walking in my spare time and I will hopefully be climbing Snowdon this year with a couple of my work colleagues.

## Oldham History Project celebrates regeneration scheme's tenth anniversary

Great Places has teamed up with award-winning charity Manchester Histories to run a local history project to commemorate the tenth anniversary of Gateways to Oldham Housing and Regeneration Venture.

The ten-year £113m Private Finance Initiative (PFI), delivered by the Inspiral Oldham Consortium, made up of Great Places Housing Group and Wates Living Space, has transformed four areas across Oldham: Crossley in Chadderton, Dew Way in Westwood, Primrose Bank in Medlock Vale and Keswick Avenue in Fitton Hill. The project has included the construction of new homes, refurbishment of existing homes and the creation of two community centres.

The six-month project will involve interviewing people who lived in these four areas before the regeneration work started and document their memories, along with those of the local and wider community. The aim is to connect residents with those who've gone before and those who will come after. The shared stories and photos will be recorded in a book, to be launched at a celebration event and upcoming exhibition at Gallery Oldham this September. A copy of the finished book will also be added to the borough's local archives.

Great Places has set up a project steering group for customers and local residents to get involved. The group will also be involved in making key project decisions, including for the final celebration and exhibition.



The project will also run a series of resident workshops, working with an artist and historian. The workshops will look to develop new skills including research, photography and visual storytelling, and will help participants increase their confidence and reduce social isolation. The sessions will be held at the Crossley or Primrose Community Centres, built as part of the PFI project.

Commenting on the project, Paul Doherty, Great Places' Housing Management PFI Manager, said:

*"I'm really excited about the plans we have for this project. I have a keen interest in social history so can't wait to hear some of the memories and stories from people who lived in the area prior to the regeneration work taking place."*

*"We hope that this project will provide a long-lasting reminder of the tenth anniversary for years to come and can be enjoyed by members of the local community."*

For further information on Manchester Histories visit <https://manchesterhistories.co.uk/>



# OLDHAM CALL OUT FOR ART AND CRAFTS!

The Young Creatives are a group of three young artists – Katie, Laura and Millie – working with Great Places Housing Group and Manchester Histories to celebrate the 10th anniversary of the Gateways to Oldham PFI project. They are exploring the history of the local area and, along with a historian, are recording residents' memories of living and working in Oldham.

As part of the project, they're asking local residents to submit art, crafts, poetry and other creative pieces to be included in an exhibition at Gallery Oldham as well as a book, to be launched in September 2023. You don't need to be a professional artist or trained craftsperson – everyone is welcome to take part!

**The Young Creatives would love you to make something in answer to the question:**

*What Does Home Look Like to You?*

This can be any form you like, and it could be:

- A drawing or painting
- A knitted / crochet / stitched piece
- A poem
- A photograph
- A letter to a place or person
- A word or phrase
- A collage

Some ideas of things that remind you of home could be:

- Your favourite room
- The view out of your window
- A piece of furniture
- A household item
- Your family or friends
- Pets
- Your garden or indoor plants

*These are just suggestions – there are no right or wrong answers!*

You can drop your items off in an envelope, box or bag with your name, address and phone number included so we know it's your work, at either The Primrose Community Centre, The Crossley Community Centre, or Fitton Hill Library. If easier, you can also send any written pieces or photographs by email to:

[oldhampfi@greatplaces.org.uk](mailto:oldhampfi@greatplaces.org.uk)

**Please submit your work as soon as you've finished it by Friday 9 June 2023.**

Local residents are also recording their memories of living in Oldham, which will become an important archive for future generations. If you would like to chat with us about your memories of living or working in the area, we'd love to hear from you too! Please email [janine@manchesterhistories.co.uk](mailto:janine@manchesterhistories.co.uk) or leave your contact details with Naseem at The Crossley Community Centre, Jan at The Primrose Community Centre or Nazet at Fitton Hill Library.

## Neighbourhood News

### High-rise block inspections are starting!

Do you live in Lansdowne Court or Stockfield Mount?

We have now introduced monthly block inspections where you can come and inspect the communal parts of the building with your Caretaker and Neighbourhood Coordinator. This will allow you to raise any concerns you have about the cleanliness or safety of the block.

The next inspections are due to take place on the following dates:

- Thursday 18 May 2023
- Thursday 22 June 2023
- Thursday 20 July 2023

Everyone is welcome; if you would like to attend, please meet your Neighbourhood Coordinator in the foyer of Lansdowne Court at 10am. The inspections will take around one hour to complete.

### New EV chargers at Primrose Bank

Following the successful installation of electric vehicle chargers at the Crossley Community Centre, we have now installed an additional two chargers at the Primrose Community Centre. At just 28p per kWh, these chargers are the cheapest in Oldham and will help reduce carbon emissions and encourage residents to switch to electric vehicles. What's more, all the profits made from the chargers will go back to the charity that runs the centre, which will help us to run activities and events for the local community.

*Pictured below from Great Places are Jason Horrocks, Community Caretaker and Jan Wade, Community Development Coordinator.*



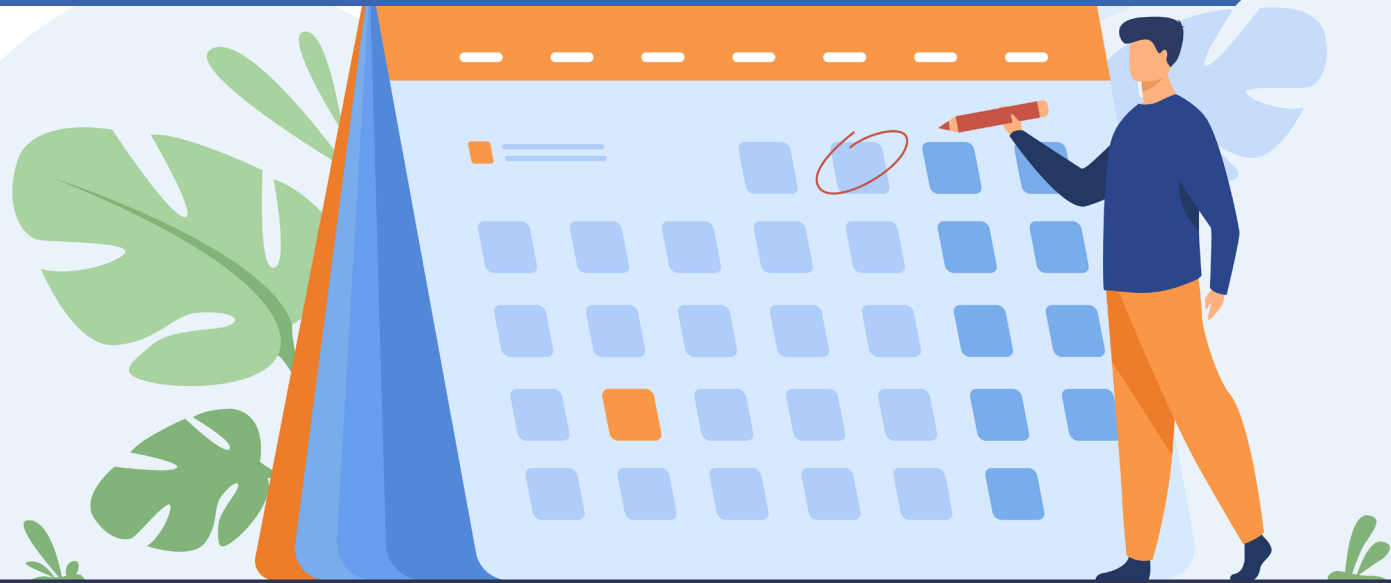
### Defibrillators are being fitted at our Community Centres

Great Places and Wates Living Space have provided funding to enable defibrillators to be installed outside our two community centres. Defibrillators are small machines that can shock a person's heart into restarting after a cardiac arrest. According to the North West Ambulance Service, if this can be done in the first few minutes, patients have a 60 to 70% chance of making a full recovery. Defibrillators are very easy to use; there is no clinical training required to use the machine and this allows members of the public to become lifesavers.





# What's on in Oldham?



## Whit Friday Brass Band Concerts 2023

Saddleworth, Friday 2nd June 2023

The 'greatest free show on Earth' is coming to Saddleworth on Friday 2nd June. Every year since 1884, the brass band contests have taken place on Whit Friday at venues scattered around the moorland villages and towns in the area, in some years with over 100 brass bands coming from around the country and beyond to compete for coveted prizes.

From local youth bands to some of the best in the country and the world, there is so much to enjoy from the first contests at 4.30pm to the announcements of the winners at around 11.30pm at the busiest contests.

The contests are run by local volunteers, with running costs and prize money raised by local donations and fundraising, which has kept it going all these years!

There is a strong tradition of brass music in the area, so why not enjoy it for yourself? Come along to one of the contests – you may even get to see more than one, although expect traffic!

For more information, visit -

<http://www.visitoldham.com/whats-on/whit-friday-brass-band-concerts-2023-p673361>



## Saddleworth Show 2023

Well-I-Hole Farm, OL37HY

25th June 2023

With two family weekend events, run entirely by volunteers, the Saddleworth Show is back for 2023 at Well-I-Hole Farm. With stalls, attractions, food and drink and bouncy castles, there's lots to entertain everyone.

It is also a showcase for local businesses, craft producers and charities, and we hope to see many visitors from outside the area. All proceeds of the show will go towards local, national and international causes, so why not come along to show your support and enjoy yourself on Sunday 25th June 2023

For more information, visit -

<http://www.visitoldham.com/whats-on/saddleworth-show-2023-p673381>



# What's on at The Primrose Centre from May '23

## Monday

10.30am - 11.30am - Fitblast

20-30 mins circuit-based session & stretching exercise for ladies

12.15pm - 2.45pm - Get Ready For Reading

Entry Level 1 (starting 16th May)

6.15pm - 7.15pm - Youth Club

Years 5 & 6 (8+ year-old)

7.15pm - 8.15pm - Youth Club

Year 7 upwards

## Tuesday

9.15am - 11.45am - Sewing Class

Learn how to alter & recycle your old clothes into new garments, bags, purses & crafts.

12.15pm - 2.45pm - Get Ready For Reading

Entry Level 1 (starting 16th May)

12pm - 2:00pm - Coffee & Crafts

Meet other ladies and learn a new craft over a 'cuppa'

6.00 - 8:00pm - Free Meal

3-course vegetarian meal provided by the Food Cycle Hub

## Wednesday

10.30 - 12:00pm - Abl Health

Healthy lifestyle sessions, support to lose weight, get active

2.30pm - 5.00pm - Parkinson's UK

Meet 1st, 3rd & last Wednesday every month

6.30pm - 8.30pm - M J Dance

Call in for more information and prices

## Thursday

1.00pm - 2.30pm - Poethery Session

Expression of emotion via poetry

7.30pm - 8.30pm - ZUMBA

For ladies only

## Friday

10.00am - 12.00pm - Art Sessions

5-week course with Lifelong Learning starting 26th May.

Contact Jan for enrolment details.

**HALL AVAILABLE TO BOOK FOR PRIVATE PARTIES**

Contact Jan on 0161 624 7202, call into the centre or e-mail [jan.wade@greatplaces.org.uk](mailto:jan.wade@greatplaces.org.uk) to book

## Saturday

**HALL AVAILABLE TO BOOK FOR PRIVATE PARTIES**

Contact Jan on 0161 624 7202, call into the centre or e-mail [jan.wade@greatplaces.org.uk](mailto:jan.wade@greatplaces.org.uk) to book

## Sunday

11.00am - 1.00pm - Rising Stars Maths & English Tuition For 6-16 year-olds

Call in for prices and information

**HALL AVAILABLE TO BOOK FOR PRIVATE PARTIES**

Contact Jan on 0161 624 7202, call into the centre or e-mail [jan.wade@greatplaces.org.uk](mailto:jan.wade@greatplaces.org.uk) to book

**WE ARE LOOKING FOR VOLUNTEERS TO HELP MAINTAIN OUR GARDENS.**

Contact Jan on 07736 693120 if you'd like to get involved.



PRIMROSE BANK  
COMMUNITY ASSOCIATION  
Charity Registration Number - 1181125

# What's on at The Crossley Centre from May '23

## Monday

10.00am – 12.00pm - Creative Crossley  
(Sewing, embroidery, crochet, knitting)

12.30pm – 2.30pm - ABL Health & Nutrition Group  
(fortnightly)

6.00pm – 8.00pm - PHAB  
(activities to reduce isolation for people of all abilities)

## Tuesday

10.00am – 12.00pm - Making Space Dementia Group

5.30pm – 7.00pm - Slimming World

## Wednesday

10.00am - 2.00pm - Oak Tree Woodcarvers  
Creative wood Carving, Annual Membership £20 plus  
£5 weekly fee. Costs includes all resources Wood and  
use of equipment.

2.00pm – 4.00pm - Community Fridge (free surplus  
food) Cozy Crossley (warm space)

6.00pm – 7.00pm - Taekwondo Martial Arts Class

## Thursday

1.00pm - 2.00pm - Chair based exercise class  
Gentle exercise

6.30pm – 8.30pm - Youth Zone  
youth club for 11-18 age group (OMBC)

## Friday

1.30pm – 3.30pm - Making Space Dementia Group

6.30pm – 8.30pm - Behind the Curtains Theatre Group

## Saturday

9.00am – 11.30pm - Slimming World

12.00pm – 8.00pm - Available for private hire

## Sunday

11.00pm – 1.00pm - Oldham Tuition Centre  
(Maths & English tuition)

2.00pm – 7.00pm - Available for private hire

Your Community Centre for Chadderton

Contact number - 0161 652 1419

@theCrossleyCentre

323 Denton Lane, Chadderton, Oldham, OL9 9GA

[www.crossleycommunity.org.uk](http://www.crossleycommunity.org.uk)



CROSSLEY COMMUNITY  
ASSOCIATION

Charity Registration Number - 1182129

## House Exchange

### Are you interested in swapping your home with another social housing resident?

House Exchange is a great service for Council or Housing Association tenants to swap their home for one that meets their needs. By creating partnerships with social landlords across the UK, providers and tenants alike are connected, helping everyone to find a home that's right for them.

### How does it work?

For instance, if your children move out and you would like a smaller home, or perhaps you would like to move closer to family; this service can help you advertise your property instantly and find 'matches' to swap homes with. There will be other tenants out there who are looking for a property like yours, so by registering you can help other families and individuals, as well as finding a property that's the right size and in the right location for you.

House Exchange is easy to use and accessible on multiple devices, with great search tools to help match your criteria. You can also message other tenants on the House Exchange website who you are interested in swapping with.

Please note that prior to proceeding with an exchange, both you and the resident you wish to swap with need permission from your respective landlords. In some circumstances, a landlord can refuse permission, for example, if there have been serious breaches of tenancy or if either property is deemed unsuitable due to the bedroom size or having adaptations. To check if you do qualify, or if you have questions about the mutual exchange process, please speak to your Neighbourhood Coordinator.

Interested? Find out more here:

<https://www.houseexchange.org.uk/>



House  
Exchange



## News from the Wider Borough



### New theatre for Oldham

Images of a brand-new theatre in the heart of Oldham have recently been released, with the new development project for a more modern and accessible theatre space. This £24 million theatre, to be funded in part by Arts Council England, is welcome news following the announcement of the Coliseum to close down for good. The new theatre will be its next chapter, with members of the Oldham Coliseum Board being closely involved with the proposals.

£1.845 million worth of Arts Council funding has secured this new chapter, this source having previously maintained the Coliseum alongside support from Oldham Council and Greater Manchester Combined Authority. Due to the old theatre now being deemed 'high risk', this new theatre will give an improved offer to performers and audiences alike.

Official planning applications will be sent by the summer, and the theatre is on track to be completed by 2026, during which time the Coliseum's theatre company will continue to take performances and build audiences elsewhere. Drawing on a wealth of expertise, the new theatre space will be situated near the current library and Gallery Oldham, and is great news for theatre lovers across the borough as it will continue the Coliseum's artistic legacy as well as create new jobs.

Original article: [https://www.oldham.gov.uk/news/article/2459/new\\_theatre\\_for\\_oldham\\_takes\\_a\\_step\\_forward](https://www.oldham.gov.uk/news/article/2459/new_theatre_for_oldham_takes_a_step_forward)

### Bulky Bobs contract renewed!

In January, the council agreed a three-year partnership with the FRC group, which means that Bulky Bobs will continue its household bulky waste collection services.

Serving the council since 2005, Bulky Bobs will now not only collect and dispose of household waste, it will also collect pre-loved items that can benefit families and residents in need, donating items like furniture and white goods across the borough.

According to Cllr Hannah Roberts, Bulky Bobs has 'carried out more than 100,000 home collections in the 17 years they have been working alongside the council, and under its new contract, the service will increase its annual collections by picking up more furniture to donate.

It currently costs £20 to have Bulky Bobs collect three items and £7 for each item collected thereafter, with an additional charge of £10 for fridges and freezers. Fabric and small electrical items are picked up for free. Whilst these fees may change in the next financial year, it is still one of the cheapest collection services in Greater Manchester, offering all customers one free collection a year.

Also a licensed waste carrier, Bulky Bobs is a vital part of the 'Don't Trash Oldham' campaign, aimed at preventing residents from giving in to fly tippers who offer to dispose of their waste for cheaper – a common problem that often sees residents pay the fine.

Original article: [https://www.oldham.gov.uk/news/article/2461/new\\_bulky\\_bobs\\_contract\\_will\\_help\\_those\\_in\\_need](https://www.oldham.gov.uk/news/article/2461/new_bulky_bobs_contract_will_help_those_in_need)



### Space created for the new town centre with the demolition of TJ Hughes

The past couple of months have seen the start of big change within Parliament Square. The former TJ Hughes was demolished to make space for the new market and events space on 27th February, whilst the development of Spindles Town Square Shopping Centre is on track for completion. Soon Oldham will be able to enjoy the new multi-purpose site for leisure, retail, the old Tommyfield Market, business enterprise and office space.

When the demolition machinery arrived on 27th February, councillor Amanda Chadderton remarked upon the 'exciting milestone in our ambitious regeneration plans', whilst thanking those who live and work nearby for putting up with any disruption in the meantime.

The wider development project in the town will see other transformations, such as repurposing the Old Library into a new public gallery, community space and council chamber. The Egyptian Room is also set to be developed into a modern food hall.

The works in the former TJ Hughes site is set to last 12 weeks, having started on 27 February, and set to finish at the end of May – during this time there are road closures and diversions to ensure safety, also with the extension of the site from mid-March onwards.

Original article: [https://www.oldham.gov.uk/news/article/2462/t\\_j\\_hughes\\_demolition\\_makes\\_way\\_for\\_vibrant\\_new\\_town\\_centre](https://www.oldham.gov.uk/news/article/2462/t_j_hughes_demolition_makes_way_for_vibrant_new_town_centre)



# How are we doing?

% of calls answered  
within 15 seconds  
92.6%

% of repairs that  
are inspected within  
20 days following  
completion  
12.39%



Estate inspections  
performance  
4 per month

Void re-let time  
13.5 days  
(target 21)

Repair for  
re-let time  
5 days



Rent collected  
99.8%  
(target 98%)



*Figures relate to January to March 2023*