

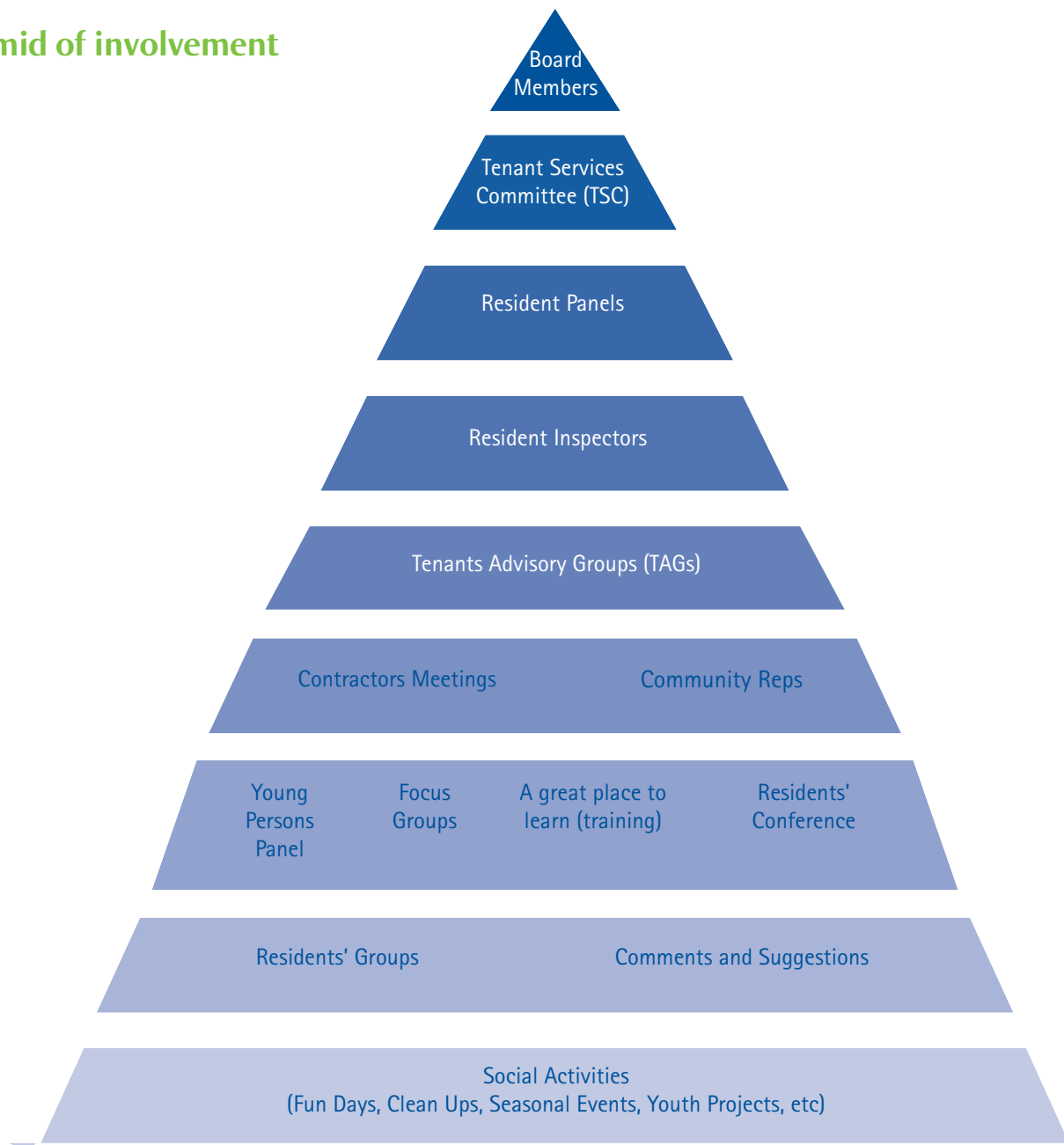
# Factsheet 11: Get involved

We aim to provide opportunities for involvement that reflect your interests and expectations. Below is our pyramid of involvement. It details the

opportunities available to you, the level of commitment they require and the support you can expect from us. For more information please contact your neighbourhood

co-ordinator or our customer involvement co-ordinators, Pauline Heron on 07786 110 713 or Laura McKelvey on 0161 484 3202.

## Pyramid of involvement





*Great Places Housing Group* Southern Gate, 729 Princess Road, Manchester, M20 2LT  
Tel: 0161 447 5000 Fax: 0161 447 5001  
e-mail: [info@greatplaces.org.uk](mailto:info@greatplaces.org.uk) [www.greatplaces.org.uk](http://www.greatplaces.org.uk)